

WADAN

WAR AGAINST DEVASTATION & ANNIHILATION

THIS ISSUE

Flood of the Century

PDMA starts Rapid Housing Survey in Khyber Pakhtunkhwa

PDMA, relief endeavors in flood affected areas

Government reviews strategy to control militancy

Worst Natural Disasters of Pakistan before & after independence

Economic Growth Activities suffer due to floods

WB and ADB agree on DNA in flood hit areas

August, 2010



PDMA-PaRRSA

Government of Khyber Pakhtunkhwa

Civil Secretariat Peshawar:

Phone: +92-91-9213488

Web: pdma.gov.pk

Flood of the Century

Media Cell Report

1

The torrential monsoon rains began in July 2010 following flash floods in the Khyber Pakhtunkhwa, Sindh, lower Punjab and Balochistan regions of Pakistan. Present estimates indicate that over 1037 people have died and 179,910 homes have been destroyed since the flooding began in Khyber Pakhtunkhwa. The PDMA estimates that more than 1,056 people are injured and 3,820,173 people affected in Khyber Pakhtunkhwa and 11,581,875 total affected in Pakistan as a result of the flooding, exceeding the combined total of individuals affected by the 2004 Indian Ocean tsunami, the 2005 Kashmir earthquake and the 2010 Haiti earthquake. However, the death count in each of those three disasters was significantly higher than the number of people killed so far in the floods. At one point, approximately one-fifth of Pakistan's total land area was underwater due to the flooding.



Charsadda Bridge washed away by flashing flood

Province/State	Deaths	Injured	Houses Damaged	Affected Population
Baluchistan	45	98	75,261	312,774
Khyber Pakhtunkhwa	1,070	1,056	179,910	3,820,173
Punjab	103	350	500,000	3,200,000
Sindh	72	680	462,251	2,269,846
Azad Jammu & Kashmir	69	83	6,472	245,000
Gilgit Baltistan	183	60	2,820	8,516
Total	1,542	2,327	1,227,858	11,581,875

UN Secretary General, Ban Ki-Moon has asked for an initial \$460 million for emergency relief, noting that the flood was the worst disaster he had ever seen. 50% of the relief funds requested has been received as of 15 August 2010. The U.N. is concerned that aid is not arriving fast enough, while the World Health

Organization reported that ten million people were forced to drink unsafe water. The Pakistani economy has been harmed by extensive damage to infrastructure and crops. Structural damages are estimated to exceed 4 billion USD, and wheat crop damages are estimated to be over 500 million USD. Officials estimate the total economic impact to be as much as 43 billion USD.

SECTOR S	Estimated Damages (Rs millions)	Estimated Damages US\$ (m)
Social Sectors	99,192	1166.965
Livelihood	16,372	192.612
Housing	78,400	922.353
Education	1,150	13.529
Health	2,780	32.706
Deaths/Injured	490	5.765
Physical Infrastructure	31,934	375.694
Transport	26,409	310.694
Water and Sanitation	1,300	15.294
Energy	4,225	49.706
Productive Sector	45,000	529
Private Sector	1,200	14.118
Agriculture, Livestock & Irrigation	23,000	270.588
Environment	20,000	235.294
Governance	800	9.412
Grand Total	176,126	2,072

Damages in Khyber Pakhtunkhwa



In Khyber Pakhtunkhwa, about 80 percent of the population in the flood affected areas depends on agriculture inclusive of crops, livestock, fisheries and forestry for their livelihood. The floods have caused damages of unprecedented scale to agriculture and families that rely on the sector as a primary or sole source of food and/or income. The disaster struck at a devastating time for farmers just prior to the harvest of key standing crops (e.g. rice, maize, vegetables, and sugarcane) and to the onset of the Rabi wheat planting season, beginning in September/October.

Rice was the most flood-affected standing crop in Khyber Pakhtunkhwa, followed by summer vegetables. In almost all affected districts, rice suffered the most extensive losses/damage.

Of the total area cultivated with rice, 71 percent was waterlogged at various degrees by flood water, with 100 percent production losses in most of the flooded areas.

The remaining standing crop is highly at risk due to badly damaged irrigation systems and lack of maintenance following the floods. Forty-five percent of areas cultivated with maize a staple and industrial crop in most of the worst affected districts were also affected by flood waters. As for rice, the majority of the flooded maize crops have been completely lost.



Damages to the livestock subsector

District	Total livestock population, including equines and excluding poultry ¹	Affected livestock population			
		Dead	Affected	Total	% of affected animals
Peshawar	741 731	5 406	18 021	23 427	3
Nowshera	586 668	33 905	145 127	179 032	31
Mardan	635 699	164	31 785	31 949	5
Charsadda	593 099	20 000	50 000	70 000	12
Swat	712 854	476	1 470	1 946	0.273
Lower Dir	609 613	2 612	0	2 612	0.428
Upper Dir	688 801	3 019	10 000	13 019	1.89
Shangla	699 116	1 222	69 911	71 133	10
Kohistan	1 212 122	2 102	242 424	244 526	20
Malakand	166 818	1 560	8 340	9 900	6
Total	66 46521	70 466	57 7078	64 7544	9.74

The highest losses to the livestock sector were reported in Nowshera district, where 30 percent of the total livestock population was affected. The second most affected district was Kohistan where the majority of the population depends on livestock on account of limited landholding. Of the total livestock population in the district, 20 percent was reported to be affected, including animal deaths and indirect adverse effects on the remaining livestock. Most of the animals in the district were small ruminants, such as goats and sheep. The third most affected district was Charsadda, where 12 percent of the losses were recorded. Flood-affected animals include buffaloes, cows, goats and equines. The losses to poultry, though not recorded, are also estimated to be extremely high.



PDMA starts Rapid Housing Survey In Khyber Pakhtunkhwa

Nasir Haider Yahya (Social Protection Specialist Report)

3

The recent monsoon rains in Khyber Pakhtunkhwa brought devastation and destruction to the whole province, unprecedented in the history of the country. This massive devastation started off from Khyber Pakhtunkhwa which then spread to other parts of the country. People were rendered homeless and their livelihoods completely destroyed. Most of the areas are still submerged in water and still threat of further flooding looms as the monsoon spell continues. The government of Khyber Pakhtunkhwa along with humanitarian organizations responded to the emergency. Provincial Disaster Management Authority (PDMA) is the leading government body for relief and rehabilitation efforts. The detailed damage assessment would be carried out at a later stage as mobility is restricted in the affected areas because of the standing water. To provide immediate relief to affected population and especially to those families or households whose houses have been damaged, PDMA has come up with a “Rapid Housing Survey and Compensation”.

The objective of the Survey is to provide immediate relief to flood affected population and especially to those families or households whose houses have been fully or partially damaged. The methodology is based on a simple approach. The districts are prioritized on the basis of damage to households as the main parameter with sub parameter of houses damaged. The approach to the district will be based on union council. Each union council will have surveying teams. The number of teams will vary from district to district and will also be directly dependent on the number of households affected and the extent of damage to the houses.

Each team will comprise of three members, one patwari, one school teacher and a nominee by an elected representative i.e. the member provincial assembly (MPA). These teams will do the field survey and will collect data on a prescribed data collection form. The data collected will be entered into a data base at the district level, which will then be transferred to the central database managed at PDMA head office. This data will be transferred on daily basis. The data received will be sent to NADRA for validation purposes

in cyclic form so as to reduce case load and back logging. The data once validated by NADRA will be fed into the MIS designed by PDMA and lists of eligible candidates will be generated.

In order to ensure that the survey is properly conducted and for effective coordination at district level, a Housing Cell will be established in PDMA. The cell will be supervised by DG PDMA for policy and strategic guidance. On the technical side the cell will be headed by the Project Coordinator assisted by assistant project coordinator. The database cell will consist of data operators, under the supervision of Database Manager. At district level there will be district coordinator for each district responsible for overall coordination with the local administration, monitoring and supervision of the survey. The district coordinator will also ensure logistic support for the teams in coordination with the district administration. He will also ensure timely transfer of data to PDMA for validation purposes.



(Muhammad Rafaqat Gakhar (Database Specialist Report))

Recent torrential rain led to the incidence of flash and river flooding, which brought havoc across the country, causes innumerable losses to the lives and infrastructure, and displacement of large number of population particularly in province of Khyber Pakhtunkhwa. It is a greatest challenge for the government to cope with this devastating situation. The main problems Government is facing are in the field of proper provision of food supply, damaged road reconstruction, cross river transport, restoration of electricity, evacuation of stranded population to name a few. In order to tackle with the situation many government and nongovernmental organizations has been approached.



For this purpose World Food Program WFP was coopted to render its services. They have sent supplies in the form of small food packages. For efficient and quick food supply, they have established a base camp at ghazi where from food packages are being air dropped to ten points in Upper Swat, so far 35 metric tons of food items have reached to Kalam.

Similarly ten separate points have been approached by WFP, which were identified with the help of locals, public representatives and WFP local IPs. However harsh weather is the huge impediment in the way of relief activities.

Nevertheless, to expedite the food supply process WFP was urged to use alternate land supply as well and create a food stock in their hub at Fatehpur. They have

started this as of August 6, 2010. Likewise WFP was further advised to involve local people, to take food packages from the WFP headquarters to the WFP points in ten designated areas through whatever multifarious means of their choice. These independent workers helping in this task is being paid accordingly, when the food supply reaches the designated area. These private individuals would create their own "MIX AND MATCH" logistic supply chains by pressing into operations manual labor, mules, pickups, tractors etc. or whatever means are available. Besides, there is an inbuilt aspect of efficient delivery in this system based on incentives, the more the trips and load transported, higher the earning.

Pak army helps the nation everywhere, whenever its services are needed. Here too army is trying to create by passes on damaged portions of roads linking Madyan from Jawara, work is in progress. To ensure that work is hastened, large numbers of locals have been hired to help the army in road track making under their supervision, PDMA is paying them on daily basis. This would not only expedite work but also create local employment and help in economic regeneration. The DCO and local administrative officers have started necessary coordination in this regard.



Simultaneously, another few old road patches across the river have been identified by us who can link Bagh Dherari with Madyan and onwards to Sataal through a jeepable road. Pak Army is working rapidly to repair Bagh Dheri Bridge. This would not only restore road link from Mingora-Khwazakhlea road with Mata Tensile but also create a linkage across the river with Madayan and up to Sataal. Government is bearing all the expenses of hundreds of locals who have agreed to render their services to undertake this project. The local MPA is also helping in organizing the people for this purpose, 14 Km jeepable road has already been made from Kalam downwards. The DCO has been sent to Kalam to compensate, encourage and organize them and to motivate the others to do the same .We can hope that we would have jeepable roads link with Kalam within 15 or 20 days. In this process the locals would have earned too. The locals are being encouraged to repair small bridges on various ravines, different places and help with purchase of indispensable materials.

Various measures have already been taken for installation of locally made cable cars to carry men and material across the river at 12 identified points from Fizagat onwards. Each cable car would have a capacity to carry approx. 600 Kgs at a time. This is available to the people free of cost; these cable cars have been placed thereby interlinking people on both sides of the river.

Restoration of electricity to different areas would take some time .Yet, to ensure operation of tube wells 10X generators out of 12 have been made functional in Mingora.6X were already functional while 4X have been made functional now.2X generators would be made functional by Aug 7. 9X tube wells are still required to cater to the tube wells of Kabal, Matta and Khwaza Khela etc. With the help of helicopters especially Chinooks, all tourists would stand evacuated weather permitting by August 8.

It is the great problematic and challenging sector for the government as nothing concrete has been done neither by health departments nor by PPHI in this regard. Cut off areas are still deprived of health cover.

Military authorities have set up one field hospital in Kalam. Similarly anti-malarial spray is being arranged for the stagnant waters to prevent malaria in those areas.

The intense flooding has washed away roads, bridges and many communications lines, hampering rescue efforts, to cater with this need, private cellular connections have been made functional by providing fuel to their towers. Cell phones are working now in most of the areas .Similarly for the proper working of police wireless system throughout the district, generators and batteries have been provided to them.

Temporary shelters in 78,713 tents have been provided and 309,494 Blanket & Matress/Quilts have also been distributed amongst the owners of destroyed houses. Similarly, 28475 rations (tons), 637500 Medicines (Individuals Vaccinated, 247980 Drinking Water (Families) and 53,517 Hygine Kits have been arranged to the flood Affectees. This just the start and there is a lot more to do in order to cope with this natural calamity.



Government appraises tactic to control militancy

6

(Media Cell Report)

The Khyber Pakhtunkhwa government is appraising a draft Post Crisis Need Assessment (PCNA), which suggests interventions in four strategic areas aimed at reducing militancy in the province and its adjoining tribal region.

The PCNA, steered by Asian Development Bank, European Union, United Nations, World Bank and Khyber Pakhtunkhwa government, was the first-ever study, looking into the causes of militancy and suggesting remedial steps.

The Provincial Disaster Management Authority (PDMA), the coordinating agency for PCNA formulation and implementation, had circulated the draft document among all the line departments, which had been advised to come up with their feedback before it was finalized.

Outlining the major drivers of crisis in FATA and Khyber Pakhtunkhwa, the PCNA argues that ineffective governance structure perpetuates a historical experience of disenfranchisement, alienation, corruption, poverty and under-development to facilitate conditions of lawlessness, insecurity and extremism. "Persistent governance deficits have created a broad political space for militant groups to present themselves as a viable alternative to the state".

Similarly, it adds the economic situation and prospects in Khyber Pakhtunkhwa and FATA have frequently been constrained by factors such as difficult geography, the adverse effects of international tensions, limited investment in human capital and a policy environment not conducive to private sector growth.

Moreover, it observes instability and conflict related to Afghanistan has resulted in a flow of militants into Pakistan's border areas, bringing with them extremist ideologies and practices.

Police and other civilian security agencies lack capacity to adequately maintain law and order; military action often leaves a security vacuum in its wake which the civil administration cannot fill. All these factors contribute to support for militant groups.

Based on these crisis drivers, the PCNA identifies peace-building priorities grouped into four overarching strategic objectives including enhance responsiveness and effectiveness of the state to restore citizens' trust, stimulate employment and livelihood opportunities, provisioning of basic services and counter radicalization and reconciliation. The PCNA also proposes institutional arrangements for the implementation of measures aimed at achieving the four strategic objectives.

It has suggested to the government to be flexible while prioritizing its projects aimed at peace building initiatives, ensure quick take-off of activities and limited timeframe of the projects should be higher than 30 months by involving multiple agencies.

The PCNA further proposes setting up of a Federal Steering Committee responsible for policy and constitutional reforms and restructuring of federal agencies, secretariat to support the FSC in establishing process roadmaps and initial planning of initiatives and a mechanism to support coordination between provincial and federal governments.

Likewise, it also recommends constitution of an apex steering committee for policymaking and an authority to handle strategic level implementation and mainstreaming technical line agencies of federal and provincial governments to handle implementation of the PCNA.

Referring to resource mobilization and financial governance, it says the government owns the PCNA and, once approved, it will be able to guide government, donors, civil society and other stakeholders.

It recommends that the government should organize a series of program alignment workshops and a PCNA conference targeting all major international donors.



Worst Natural Disasters of Pakistan before & after independence

Media Cell Report

Pakistan Floods 2010

About 1600 people have been died in recent floods in Pakistan and over 10 million affected. Pakistan has sought international help to handle with the calamity. Despite mass evacuations, there are fears the death toll will rise as flooding reaches the southern province of Sindh and the risk of water-borne disease outbreaks increases in many areas.



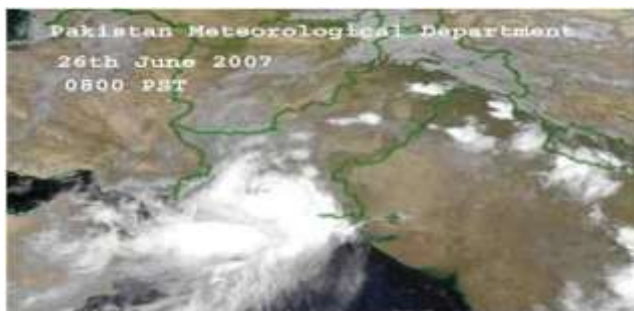
2010 Hunza Lake Disaster

A landslide in January 2010 in Attabad village in north of the country killed 20 people which led to around 40 houses sliding into the Hunza River. Wreckages from the landslide caused the river to dam, leading to the formation of a large lake which threatened to flood downstream areas. About 20,000 were forced to leave their homes by June, 2010.



2007 Cyclone Yemyin

At least 730 people died as a result of flash floods triggered by Cyclone Yemyin, which struck coastal areas in early July 2007. About 350,000 people were displaced, 1.5 million affected and more than two million livestock perished.



2005 Kashmir Earthquake

A 7.6-Richter scale earthquake hit the Kashmir region on the India-Pakistan border and parts of northwestern Pakistan on 8 October 2005. According to official figures, at least 73,000 people were reported dead and more than 3.3 million made homeless. Work even continues today to rebuild damaged infrastructure.



2000 Drought

At least 1.2 million people in Balochistan were affected by drought, and over 100 died, mostly because of dehydration, according to the government. Millions of animals perished. The drought lasted over 10 months.



1974 Hunza Earthquake

A 6.2 Richter scale earthquake smashed Kohistan and surrounding areas including parts of Swat, Hunza and Kashmir in northern Pakistan in 1974. About 5,300 people were killed, 17,000 injured and 97,000 affected. Landslides and rock falls contributed to the damage.



1970 East Pakistan Cyclone

The Bhola tropical cyclone hit the territory in 1970 was the deadliest steamy cyclone ever recorded and is rated as one of the worst natural disasters in modern times. Up to 500,000 lost their lives, primarily as a result of the storm surge that flooded much of the low-lying islands of the Ganges Delta.



1950 Floods

Monsoon rain in 1950 killed an estimated 2,900 people across the country. Punjab Province, including the city of Lahore, was among the worst hit when the River Ravi flooded. Over 100,000 homes were destroyed, leaving around 900,000 people homeless.



1945 Baluchistan Earthquake

A 7.8 Richter scale earthquake hit southwestern Balochistan on 28 November 1945. The epicenter was 98km southwest of the town of Pasni. Apart from massive damage to property, the quake led to a 40-foot tsunami causing the deaths of over 4,000 people.



1935 Quetta Earthquake

A 7.7 Richter scale earthquake virtually leveled the city of Quetta in the province of Balochistan. About 60,000 people were killed in one of the deadliest earthquakes to hit South Asia. The epicenter was about 153km from Quetta.



Damages to Tourism (Hotel) Sector in SWAT

According to a survey conducted by USAID FIRMS Project the total losses to the hotel industry in Swat are estimated to be approx PKR 650 million. Data collected shows that the maximum losses were incurred in Kalam. The magnitude of damages/losses to hotel sector caused by the flood in Swat is estimated to be 20 times more than that of the losses caused earlier by Malakand conflict.



Rubble of a hotel in SWAT destroyed in Floods



Damaged Road and Hotel in Swat

Damages to Fish Farms that were being developed by USAID

USAID Firms project was rehabilitating 22 Fish farms in Swat, out of the total only 17 fish farms could be surveyed by the FIRMS Project for rapid flood damaged assessment, 10 TFF were completely damaged and washed away by high intensity of flood, 4 TFFs were partially damaged, while only 3 TFFs did not receive any significant losses as a result of flood. The financial losses of 14 fully and partially damaged due to flood amounts to approx PKR 26 million.



USAID Apprenticeship and skill development program by Jobs Project

Major fallout of the recent floods in Swat that disrupted power supply to the area for almost four weeks. The skill development activities being carried out by USAID Jobs project in the form of “On-the Job Training” within Swat’s power intensive Silk and Marble Processing Industries in Bunair. Out of a total of 249 planned trainees placed “On-the-Job” in Silk and Marble Processing units, trainings for 203 trainees remains suspended owing to outage of electricity since 26th July 2010.

WB and ADB agree on DNA in flood hit areas

10

Media Cell Report

The World Bank and Asian Development Bank on acceptance of the request of the Government of Pakistan have agreed to conduct a DNA (Damages Need Assessment) in Pakistan for reconstruction and rehabilitation of the damaged public infrastructure.

1015 people lost their lives and around 1000 people got severe injuries in the recent floods in Khyber Pakhtunkhwa. Some 3.8 million people are affected and 1.5 million rendered homeless. 220,000 houses, 6000 shops, 1300 water supply schemes, 700 educational facilities, 100 health facilities, 149 government sector buildings and above 2000 km road have been reported damaged. 650 transformers, 500 electric poles and 5 grid stations in different parts of the province have been destroyed.

In order to initiate the Flood 2010 DNA activities in Khyber Pakhtunkhwa, the first meeting for orientation of departmental focal persons was held on August 24, 2010 in the PDMA office here in Peshawar. The Focal Persons in various departments and Mr. Farman Khilji, Consultant World Bank attended the meeting.

Mr. Asghar Ali, Director Administration, PDMA / Provincial Focal Person welcomed the participants and the consultant. Talking to the meeting he informed the audience that the DNA would be conducted in 12 Sectoral heads covering all service providing departments.

The consultant of World Bank informed the meeting that World Bank will led Water and Sanitation, Transport and Communications, Irrigation, Health, Energy, Governance infrastructure Sectors while Asian Development Bank will led Housing, Agriculture, Education, Environment, Private Sector Industries, Social protection sectors. He also discussed the templates with the participants and answered their queries to a greater extent. One of the participants proposed that a Focal Person from Bureau of Statistics may also be included in the Committee, the Committee approved the proposal.

Mr. Asghar Ali requested the participants, to furnish the accurate data at the earliest. It was decided that second meeting of the Committee would be held on August 30, 2010 at 10 AM in the office of PDMA.





PDMA-PaRRSA

**Govt. of Khyber Pakhtunkhwa
Civil Secretariat Peshawar**

WRITE TO EDITOR

ADNAN KHAN

Communication Specialist
adnan@pdma.gov.pk
Cell No: 0321-5195517

LATIF UR REHMAN

Public Relations Officer
latifmedia@gmail.com
Cell No: 0315-9132736